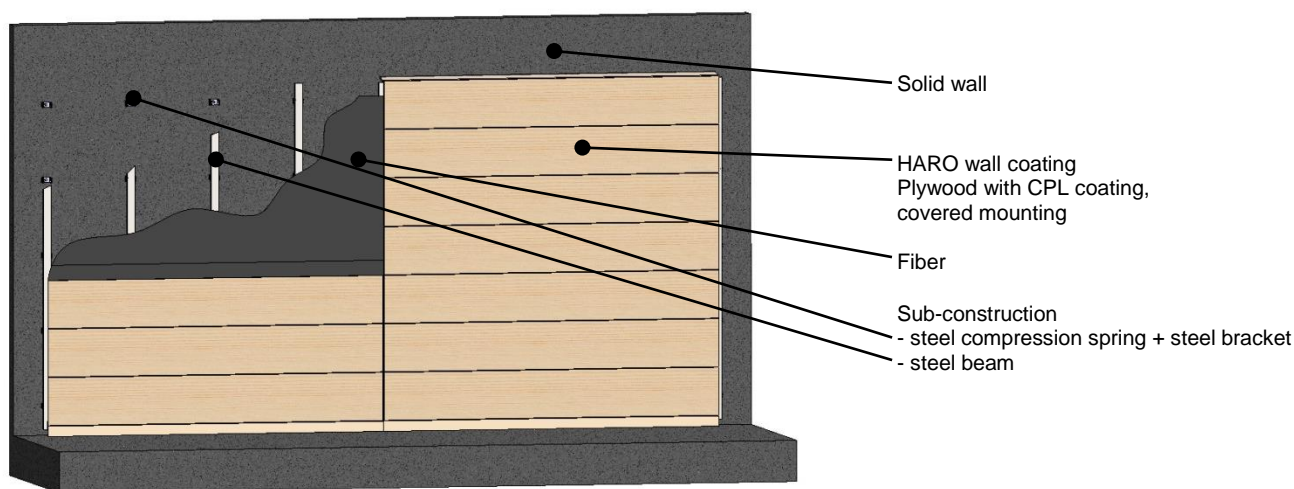


HARO Sports Floors

Dominating the game.

Protect Pro Plywood L VNK

Type: Area-elastic protective wall
Usage: Sports and multi-purpose facilities



Installation on an even wall surface acc. to DIN 18202, 1997-04, chart 3

Model Protect Pro Plywood L VNK

HARO optional sub-construction (special cases only)
Consisting of wide span supporting elements to increase the wall depth

HARO sub-construction with shock absorption
Consisting of steel compression spring, steel bracket and steel beam

80 mm

HARO plywood wall coating, with CPL-coating
sharp edges removed
Standard length: 2450 mm
Standard width: 400 mm, 600 mm, 1.200 mm

15 mm

Construction height

from 95 mm

The protective wall model PROTECT Pro Plywood L VNK meets the DIN 18032-1, April 2001, the DIN 18032-3, April 1997 and the safety information requirements of the Unfallkasse Sachsen (GUV-SI 8468).

